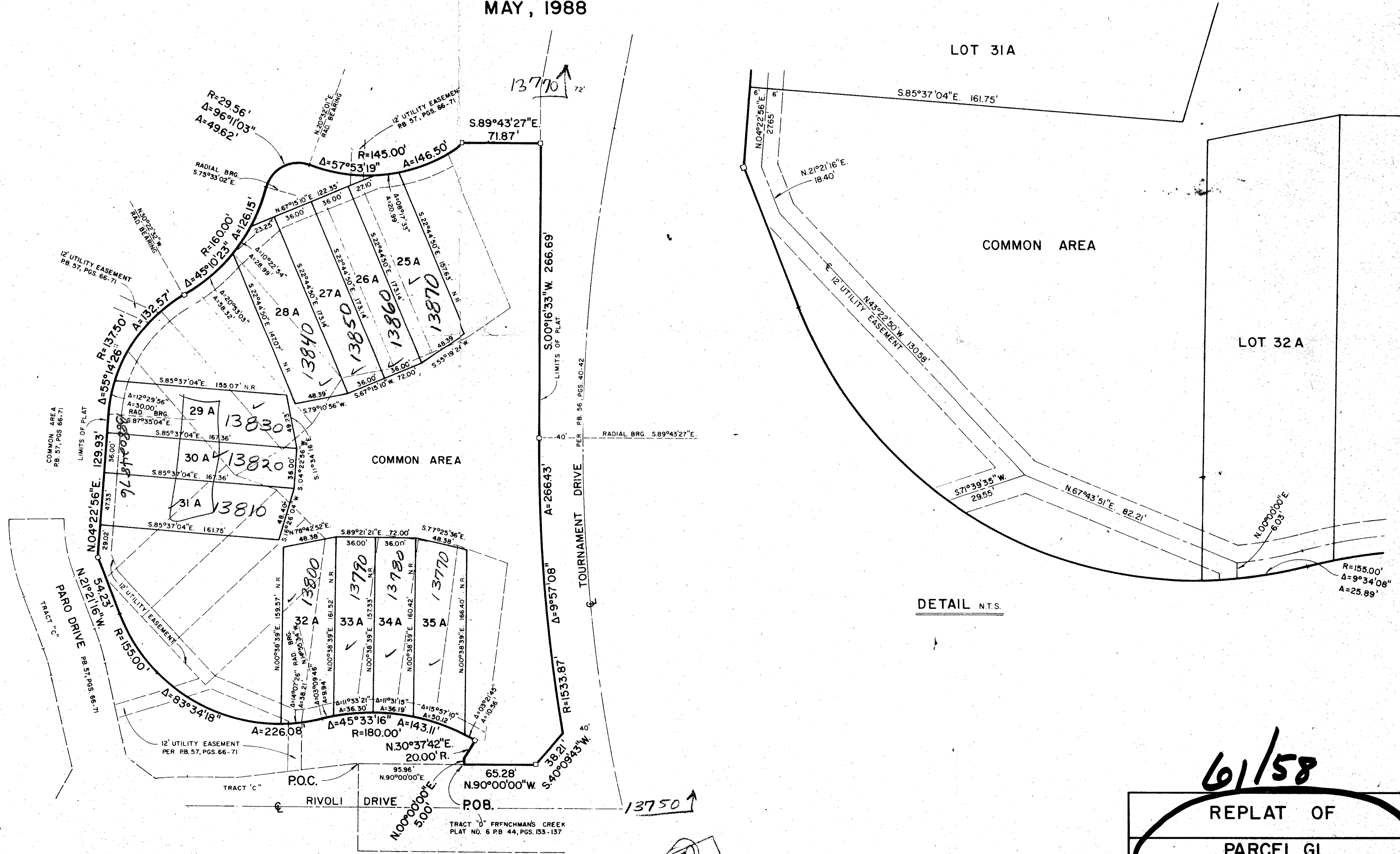
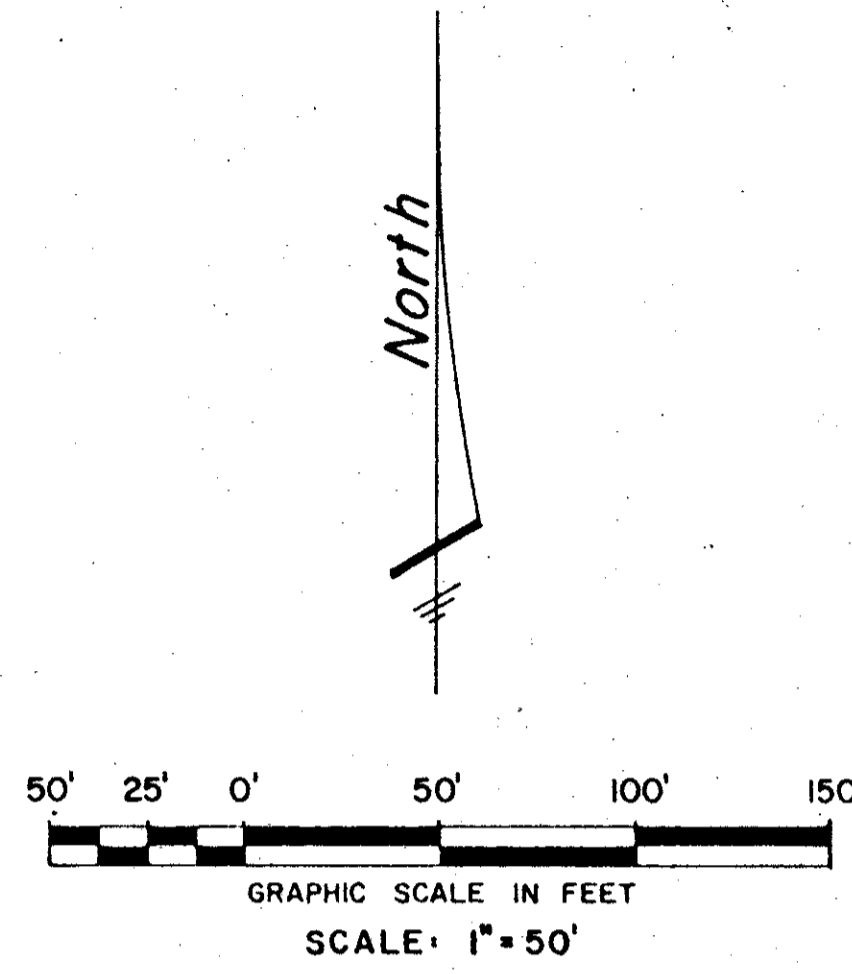


REPLAT OF PARCEL G1 FRENCHMAN'S CREEK (A P.U.D.)

BEING A REPLAT OF A PORTION OF PARCEL G1 FRENCHMAN'S CREEK,
A P.U.D. LYING IN SECTION 30, TOWNSHIP 41 SOUTH, RANGE 43 EAST,
PALM BEACH COUNTY, FLORIDA.
MAY, 1988



DETAIL N.T.S.

TAZ 48

RS 73-90

9/12/88

ADD. BY
CHECKED BY

61/58

REPLAT OF
PARCEL G1
FRENCHMAN'S CREEK, A P.U.D.

WALLACE SURVEYING
CORPORATION

FIELD	W. B.	JOB NO.	88-1085 "A"	FB-FC	PG.
OFFICE	R.M.R.	DATE	MAY, 1988	DWG NO.	88-1085 "A"
CK'D	F. G.	REF.		SHEET	3 OF 3